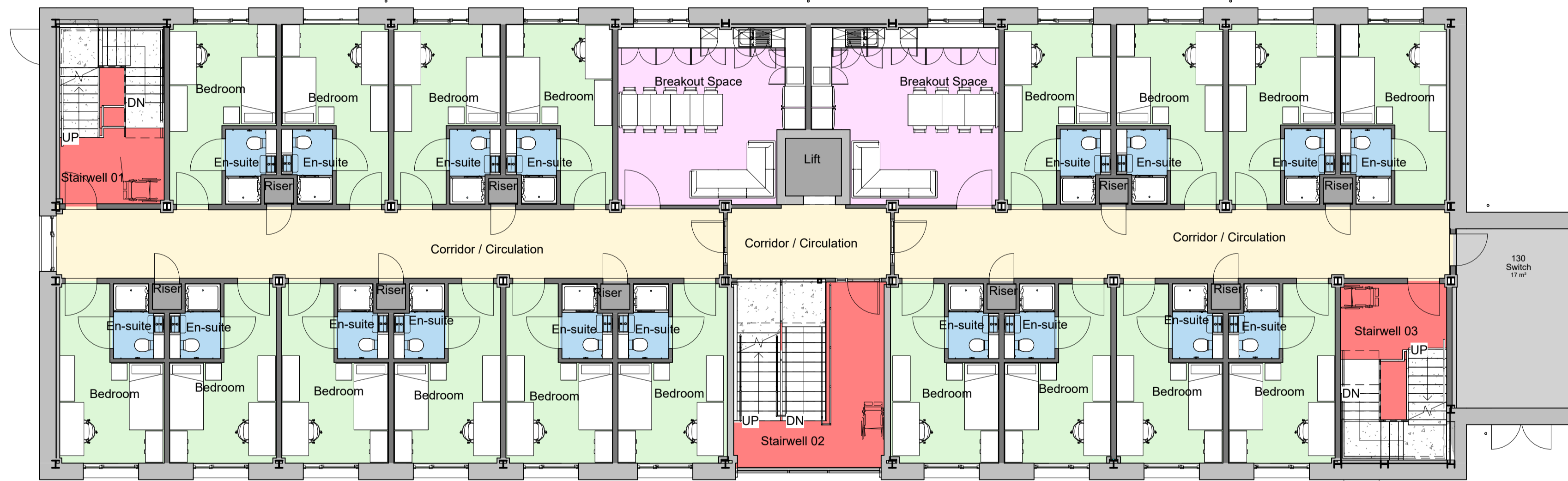
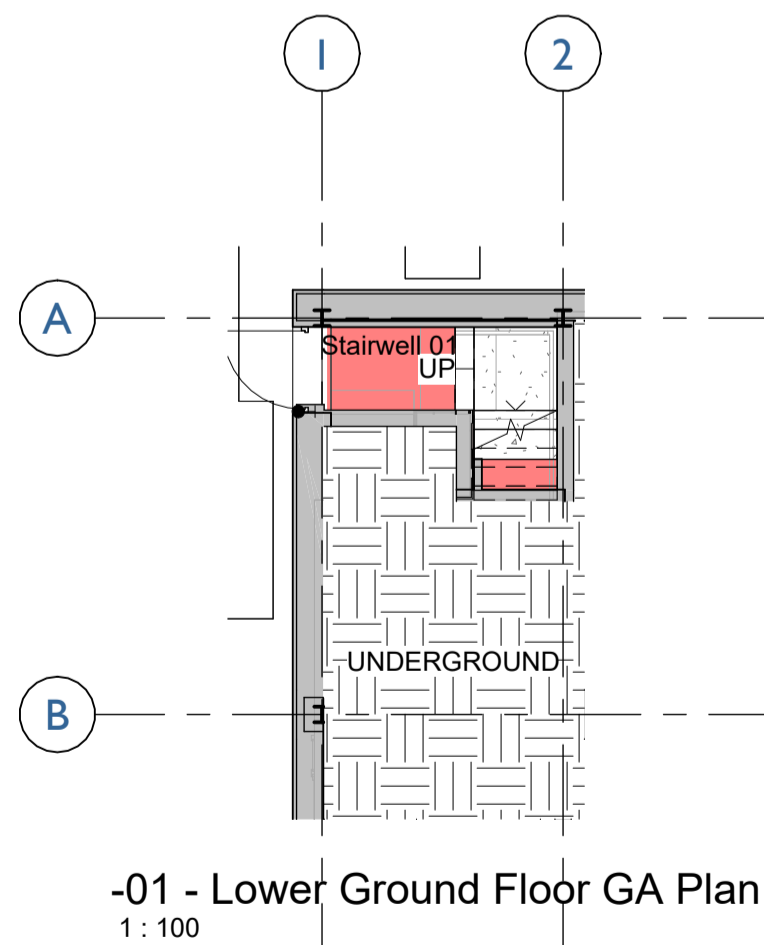


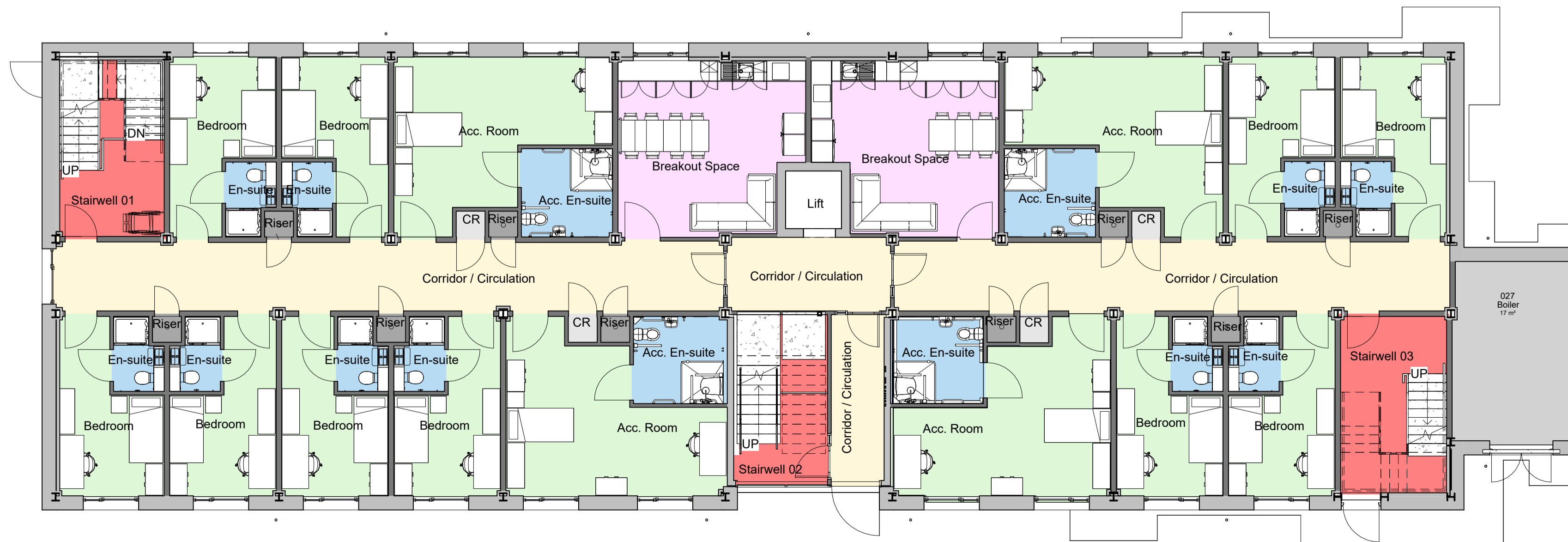
02 - Second Floor - GA Plan
1 : 100



01 - First Floor - GA Plan
1 : 100



-01 - Lower Ground Floor GA Plan
1 : 100



00 - Ground Floor - GA Plan
1 : 100

- General Notes
1. Contractor to verify all dimensions and check level datums on site
 2. All of the designs are the sole property of TACP Architects Ltd and may not be used without their written agreement
 3. All prints, specifications and their copyright are the property of TACP Architects Ltd
 4. Do not scale off drawings (except for Planning purposes).
 5. All dimensions shall be checked on site before commencement of shop drawings, manufacture and all discrepancies must be reported to TACP Architects Ltd

Room Schedule			
Level	Department	Area	Name
-01 - Lower Ground Floor	Fire Escape Stairwell	7 m ²	Stairwell 01
00-Ground Floor	Bedroom	215 m ²	<varies>
00-Ground Floor	Breakout Spaces	50 m ²	Breakout Space
00-Ground Floor	Circulation	86 m ²	Corridor / Circulation
00-Ground Floor	Fire Escape Stairwell	43 m ²	<varies>
00-Ground Floor	Plant	17 m ²	Boiler
00-Ground Floor	Services	8 m ²	<varies>
00-Ground Floor	Storage	2 m ²	CR
00-Ground Floor	Toilets	54 m ²	<varies>

01-First Floor	Bedroom	219 m ²	Bedroom
01-First Floor	Breakout Spaces	50 m ²	Breakout Space
01-First Floor	Circulation	78 m ²	Corridor / Circulation
01-First Floor	Fire Escape Stairwell	51 m ²	<varies>
01-First Floor	Plant	17 m ²	Switch
01-First Floor	Services	8 m ²	<varies>
01-First Floor	Toilets	49 m ²	En-suite

02 - Second Floor	Bedroom	219 m ²	Bedroom
02 - Second Floor	Breakout Spaces	50 m ²	Breakout Space
02 - Second Floor	Circulation	82 m ²	<varies>
02 - Second Floor	Fire Escape Stairwell	53 m ²	<varies>
02 - Second Floor	Plant	9 m ²	COMMS
02 - Second Floor	Services	8 m ²	<varies>
02 - Second Floor	Storage	4 m ²	Store
02 - Second Floor	Toilets	49 m ²	En-suite
		1430 m ²	

Rev	Date	Description	By	Check
P01	17/05/24	Issued for comments	CM	AC
P02	18/07/24	Revised scheme in-line with Fire Engineer's comments	GCM	AJC
P03	24/07/24	Issued for Planning	GCM	AJC
P04	12/08/24	Issued for comment	CM	AC
T01	20/09/24	Tender Issue	GCM	AJC
T02	09/10/24	Glazing added to corridor	CM	AJC
P05	07/11/24	Issued for Planning. New building location	GCM	AJC

Client
Coleg Cambria

Project Title
Llysfasi Accommodation Block

Sheet Name
GA Plans

Classification _____ Status _____

Scale	Date	Drawn By	Checked By	Office
1 : 100@A1	18/03/24	GCM	AJC	Wrexham

Job Number: 23041 | Project: LAB-TACP-PB-ZZ-DR-A-1000 | Revision: P05

TACP Architects Ltd
Pembroke House
Ellice Way, Wrexham Technology Park,
Wrexham, LL13 7YT
01978 291161
admin@tacparchitects.co.uk
www.tacparchitects.co.uk

