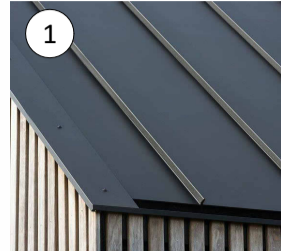
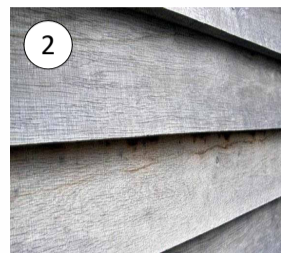
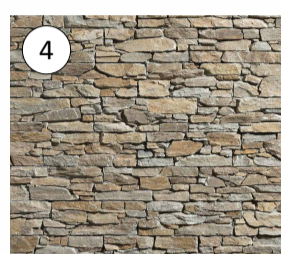


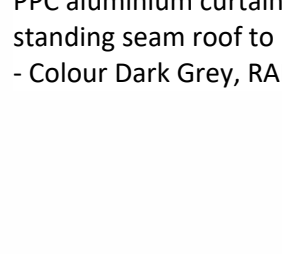


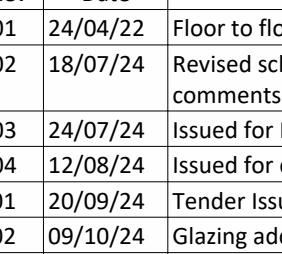
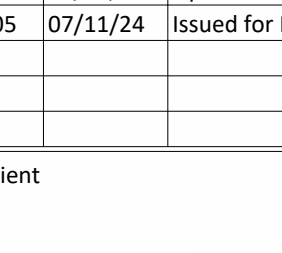
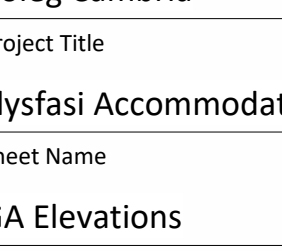


General Notes

1. Contractor to verify all dimensions and check level datums on site
2. All of the designs are the sole property of TACP Architects Ltd and may not be used without their written agreement
3. All prints, specifications and their copyright are the property of TACP Architects Ltd
4. Do not scale off drawings (except for Planning purposes).
5. All dimensions shall be checked on site before commencement of shop drawings, manufacture and all discrepancies must be reported to TACP Architects Ltd

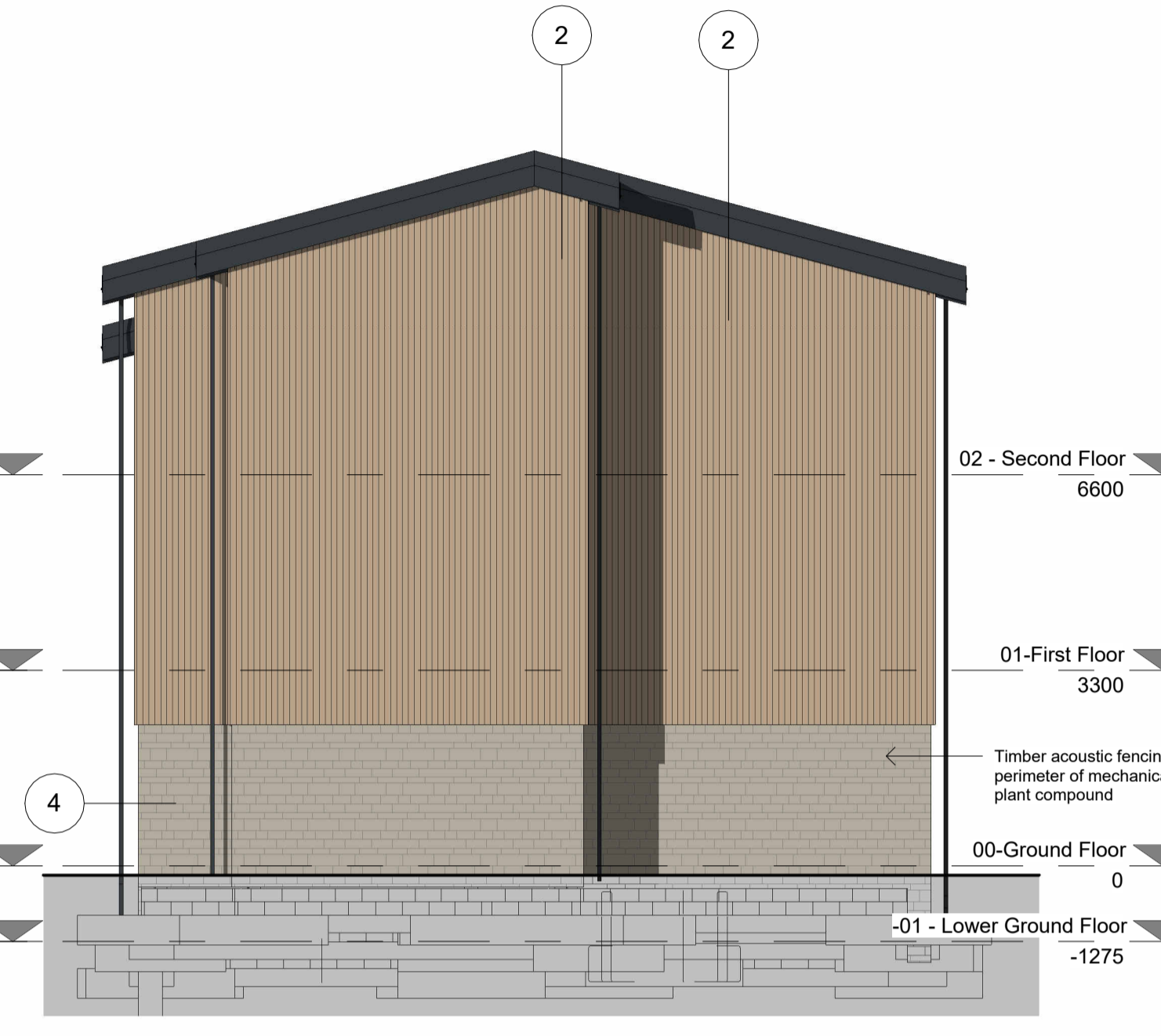
MATERIAL KEY

- | | |
|---|---|
|  | 1 Metal standing seam profiled roof - Colour Dark Grey, RAL 7016 |
|  | 2 Vertical Thermowood secret fix profile - VT2566 - 21f x 118f/98 face |
|  | 3 Horizontal Thermowood open batten for ventilation |
|  | 4 Taylor Maxwell Stone panel cladding system - Sahara 49R-MF |
|  | 5 PPC aluminium double glazed window & curtain walling - Colour Dark Grey, RAL 7016 |
|  | 6 PV array |
|  | 7 PPC aluminium downpipes Colour Dark Grey, RAL 7016 |
|  | 8 PPC aluminium profiled gutter/fascia - Colour Dark Grey, RAL 7016 |
|  | 9 PPC aluminium 3D logo lettering |
|  | 10 Insulated Spandrel Glass Panel - Colour Dark Grey, RAL 7016 |
|  | 11 External PPC Aluminium Louvre Door |

PPC aluminium curtain walling / gutters / fascias / downpipes / standing seam roof to be the same dark grey finishes - Colour Dark Grey, RAL 7016



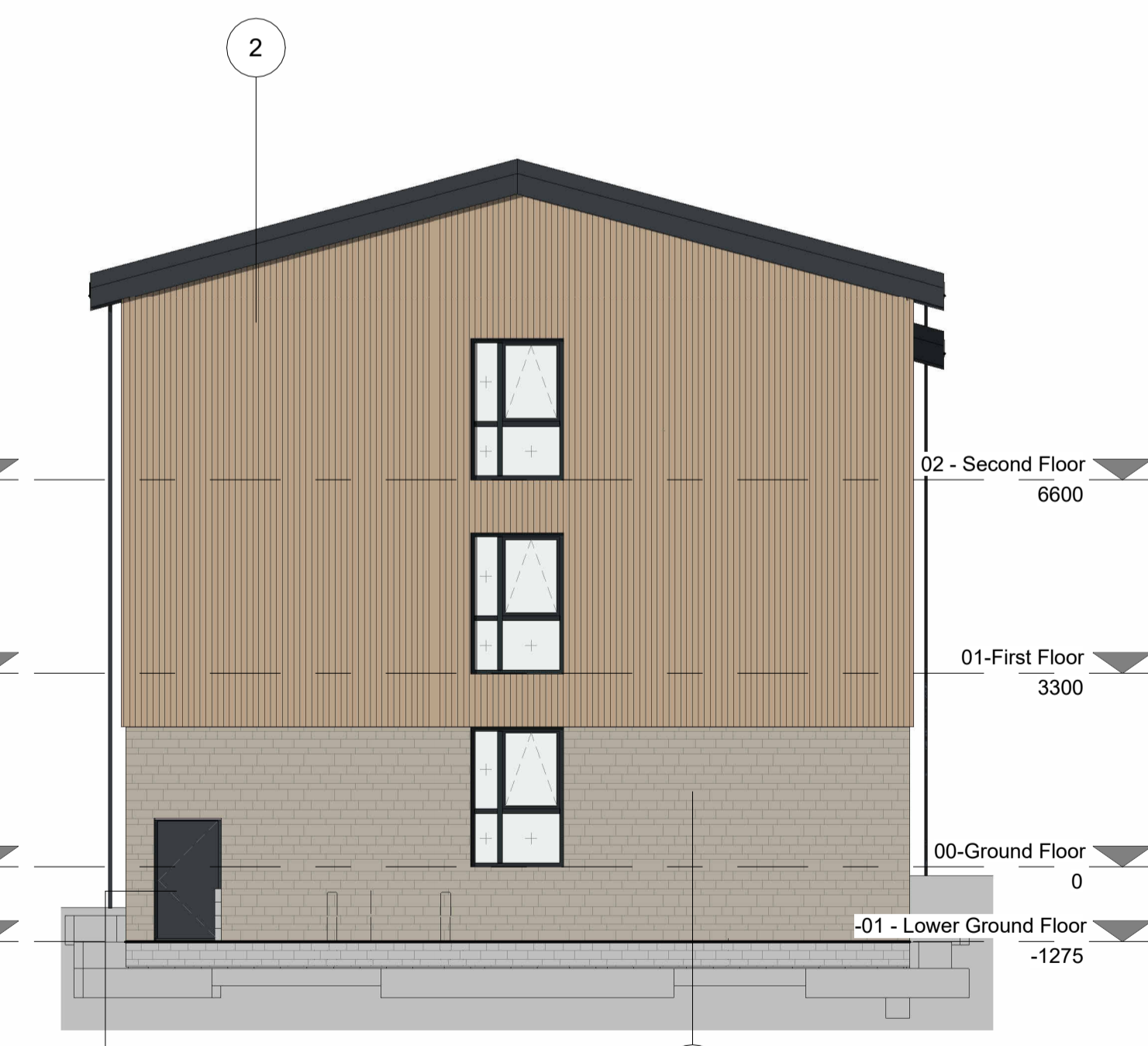
Elevation 1
1 : 100



Elevation 2
1 : 100



Elevation 3
1 : 100



Elevation 4
1 : 100

Revisions

Rev	Date	Description	By	Check
P01	24/04/22	Floor to floor increased	GM	AJC
P02	18/07/24	Revised scheme in-line with Fire Engineer's comments	GCM	AJC
P03	24/07/24	Issued for Planning	GCM	AJC
P04	12/08/24	Issued for comment	CM	AC
T01	20/09/24	Tender Issue	GCM	AJC
T02	09/10/24	Glazing added to corridor	CM	AJC
T03	01/11/24	Updated inline with comments from contractors	CM	AJC
P05	07/11/24	Issued for Planning. New building location	GCM	AJC

Client

Coleg Cambria
Project Title
Llysfasi Accommodation Block

GA Elevations

Classification Status

Scale Date Drawn By Checked By Office

1 : 100@A1 18/03/24 GCM AJC Wrexham

Job Number Project Originator Zone Level Type Role Number Revision

23041 LAB-TACP-PB-ZZ- DR-A-2000 P05

TACP Architects Ltd
Pembroke House
Ellice Way, Wrexham Technology Park,
Wrexham, LL13 7YT
01978 291161
admin@tacparchitects.co.uk
www.tacparchitects.co.uk

